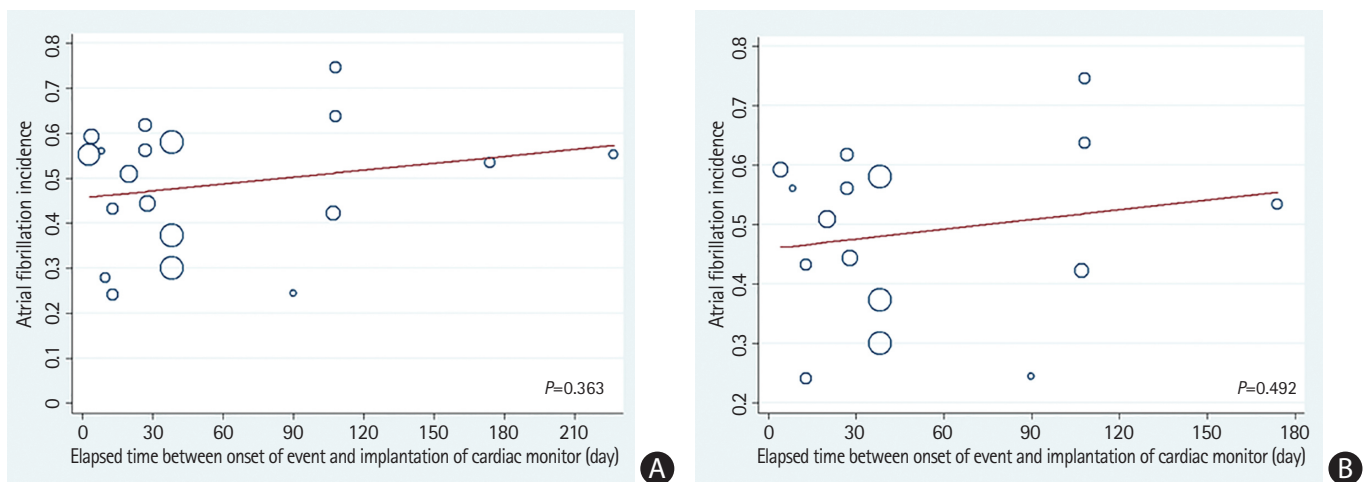


Supplementary Figure 8. Meta-regression analysis of the association of mean patient CHA₂DS₂VASc score with the rate of atrial fibrillation detection with implantable cardiac monitors reported in (A) all included (abstracts and full publications) studies and (B) fully published studies. Atrial fibrillation incidence was calculated using the double arcsine Freeman-Tukey transformation.



Supplementary Figure 9. Meta-regression analysis on the association of mean elapsed time from ischemic stroke or transient ischemic attack onset to cardiac monitor implantation, with the rate of atrial fibrillation detection with implantable cardiac monitors reported in (A) all included (abstracts and full publications) studies and (B) fully published studies. Atrial fibrillation incidence was calculated using the double arcsine Freeman-Tukey transformation.