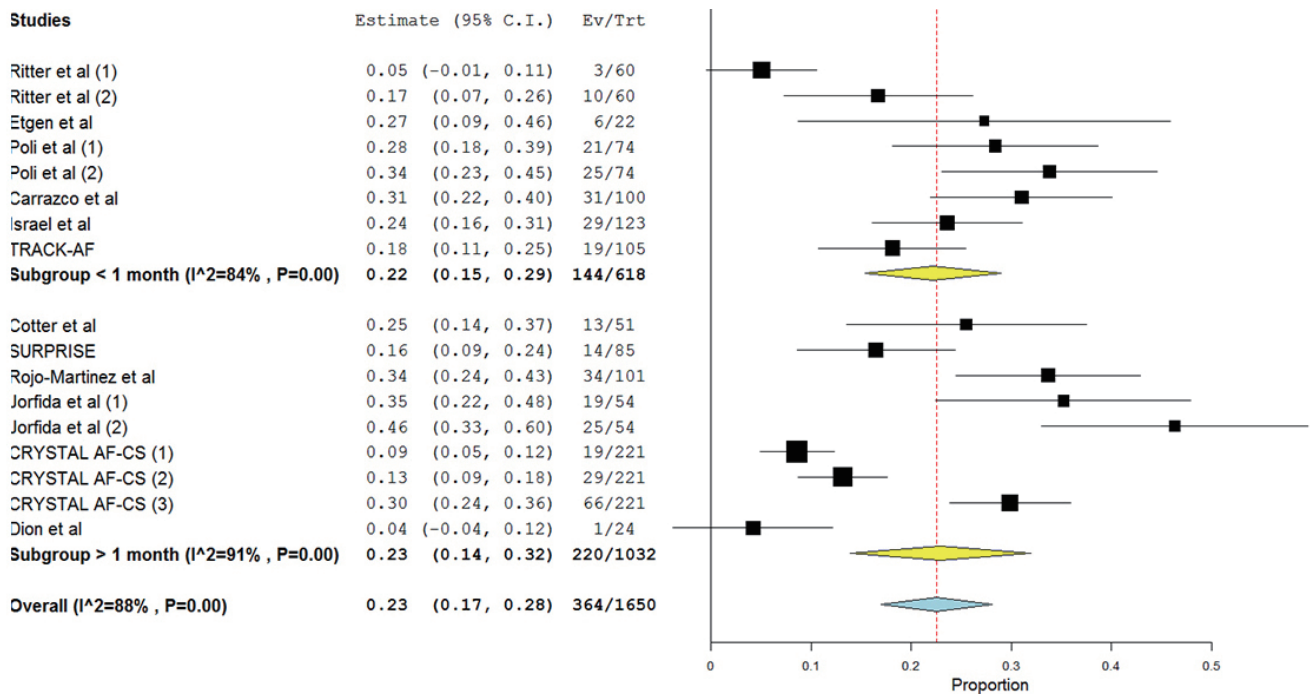


**Supplementary Figure 18.** Subgroup analysis of the rate of atrial fibrillation detection with implantable cardiac monitors, stratified by the time threshold used for atrial fibrillation diagnosis (30 seconds and 2 minutes) in fully published studies. CI, confidence interval; EV/Trt, events/treated; NA, not available.



**Supplementary Figure 19.** Subgroup analysis of the rate of atrial fibrillation detection with implantable cardiac monitors, stratified by the elapsed time between ischemic stroke/transient ischemic attack onset and implantation of cardiac monitor ( $\leq 1$  and  $> 1$  month), in fully published studies. CI, confidence interval; EV/Trt, events/treated.