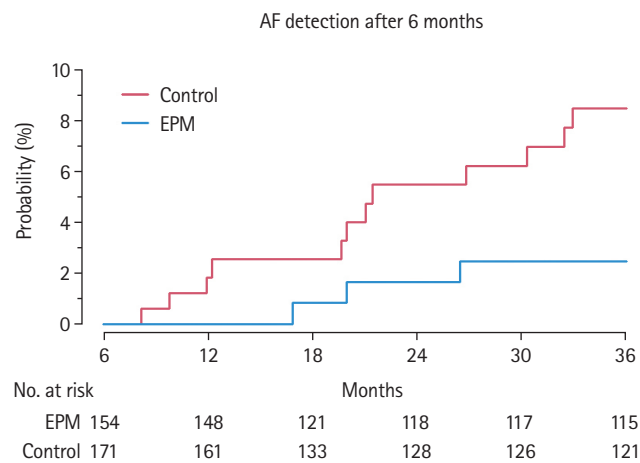


Supplementary Table 2. Details of patients with AF detection by the study intervention

Age (yr)	Sex	Days after randomization	Holter ECG (n)	No. of AF episodes	Duration of longest episode (min)
75	F	1	1	1	5,070
76	F	1	1	1	8,940
85	M	1	1	1	1
73	F	1	1	1	0.7
60	M	1	1	12	300
73	M	1	1	2	4,432
74	F	1	1	1	14,400
80	M	2	1	2	1,440
78	M	2	1	1	2
61	M	4	1	1	180
65	F	4	1	2	1
73	F	4	1	4	300
88	M	4	1	1	1,695
72	M	5	1	1	4,380
96	F	6	1	1	913
88	F	6	1	1	4,242
62	M	7	1	1	925
83	F	8	1	1	150
70	M	87	2	1	6
64	M	90	2	1	439
60	F	91	2	3	4
60	M	98	2	1	0.5
75	F	113	2	2	2
72	F	125	2	4	2,790
74	F	187	3	1	0.6

During the first 6 months after randomization, two patients in the intervention arm had AF detection outside of the study intervention. AF, atrial fibrillation; ECG, electrocardiography.



Supplementary Figure 1. Detection of AF conditional on no atrial fibrillation detection until 6 months. EPM, enhanced and prolonged monitoring.