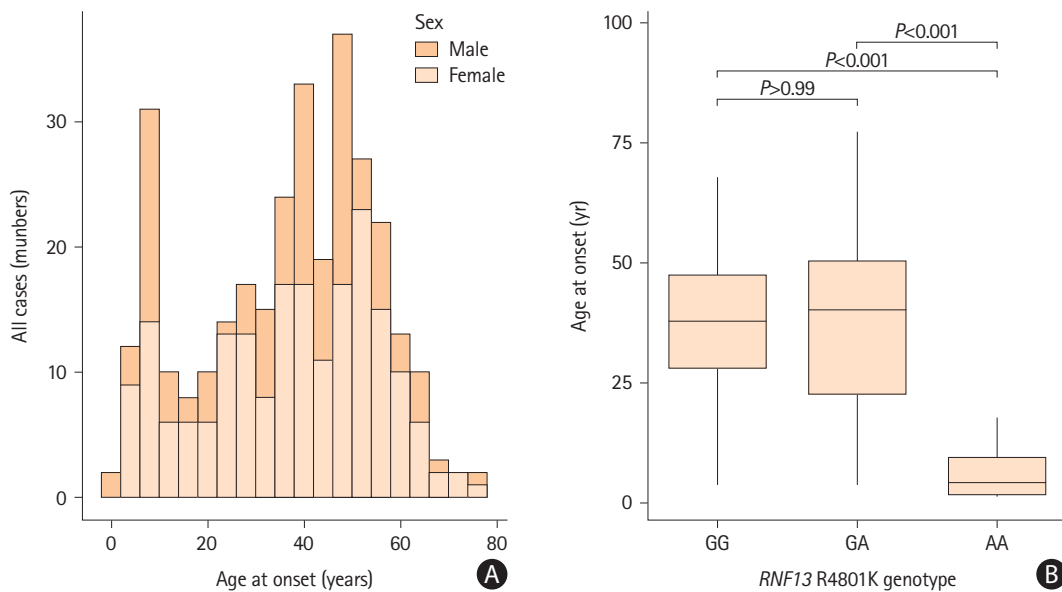


Supplementary Figure 1. Flowchart for the selection of moyamoya disease patients with ring finger protein 213 (*RNF213*) genotyping.



Supplementary Figure 2. Age distribution patterns in moyamoya disease and correlation between ring finger protein 213 (*RNF213*) R4810K genotype and age at onset. (A) Dual peak distribution of moyamoya disease. (B) A box plot of the age at onset among 3 groups of patients: homozygotes (AA), heterozygotes (GA), and wild types (GG) of *RNF213* R4810K variant.