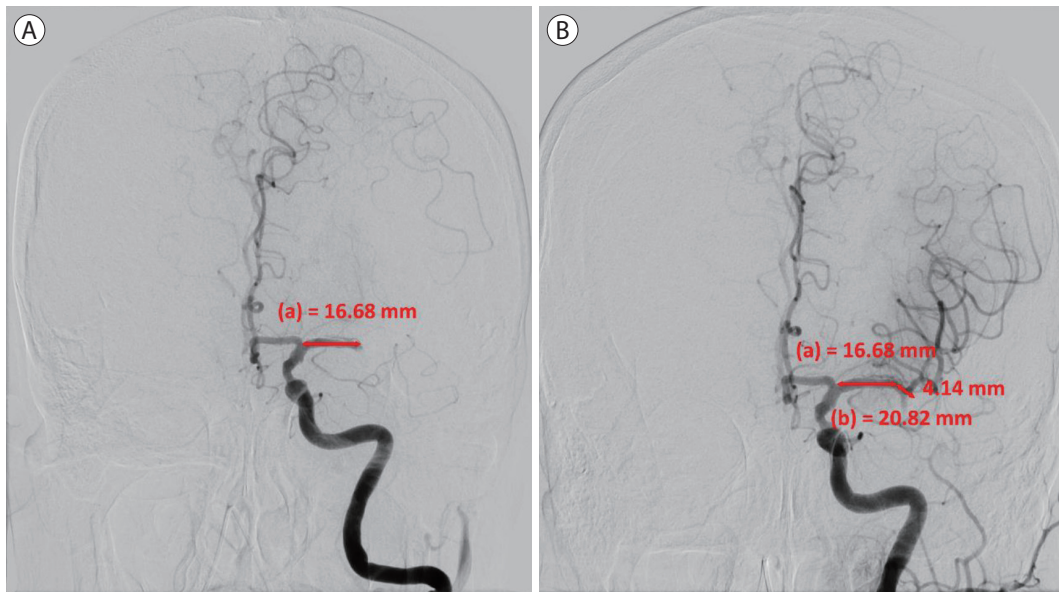


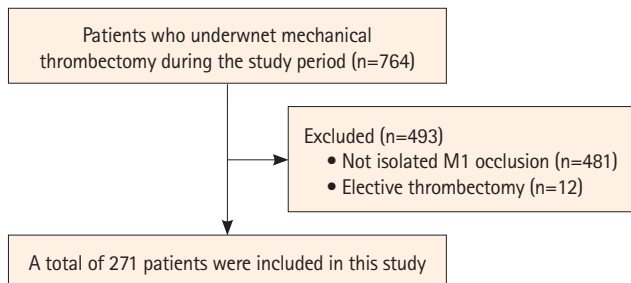
**Supplementary Table 1.** Multivariate logistic regression analysis of functional independence in the total study population

Variables	OR (95% CI)	P
Age	0.94 (0.91–0.96)	<0.001
Hypertension	0.93 (0.49–1.78)	0.834
Intravenous thrombolysis	2.64 (1.31–5.29)	0.006
NIHSS at baseline	0.93 (0.87–0.99)	0.028
Successful recanalization	2.69 (1.22–5.93)	0.014
Stent retriever	0.51 (0.27–0.96)	0.036
Hemorrhagic transformation	0.39 (0.21–0.72)	0.003

OR, odds ratio; CI, confidence interval; NIHSS, National Institutes of Health Stroke Scale.



**Supplementary Figure 1.** A representative case of left distal M1 occlusion. (A) The length of the measurable ipsilateral MCA with occlusion before MT (a) was 16.68 mm. (B) After successful recanalization, the total MCA (b) was 20.82 mm. This case was classified as a distal M1 occlusion ( $16.68/20.82 \times 100 = 80.12$ ). MCA, middle cerebral artery; MT, mechanical thrombectomy.



**Supplementary Figure 2.** Flow diagram of the study patients.