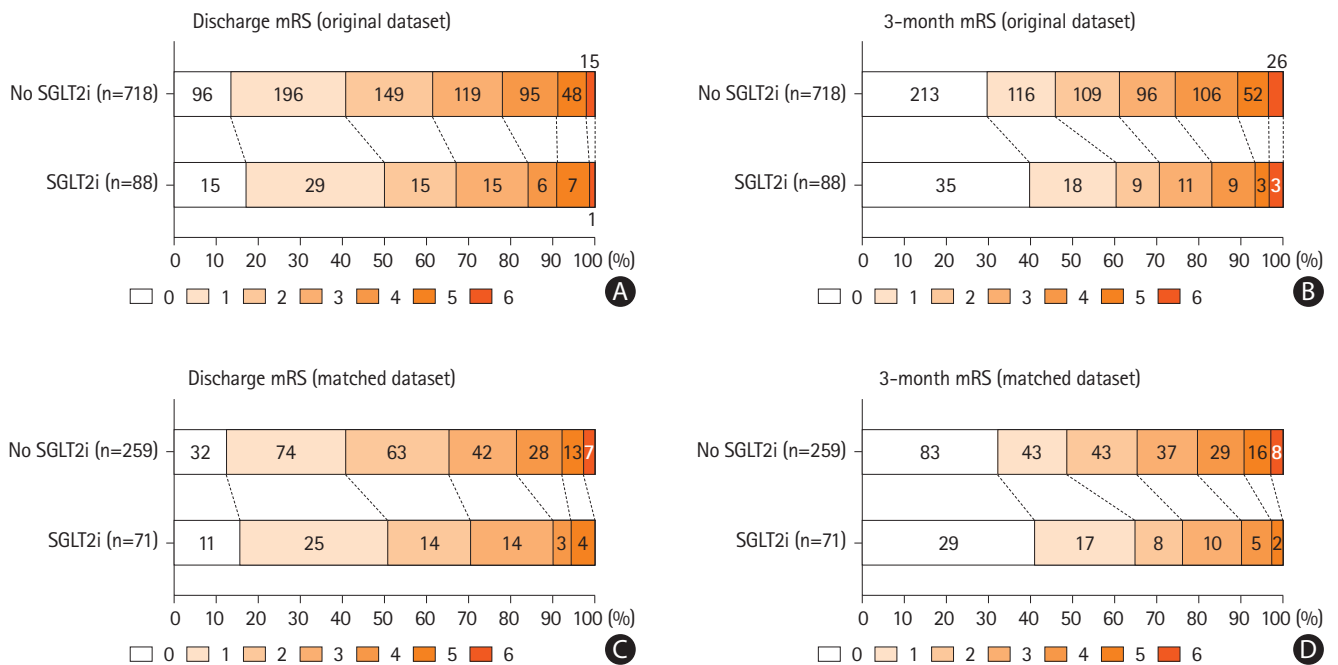


Supplementary Figure 1. Flowchart of patient inclusion and exclusion. MRI, magnetic resonance imaging; SGLT2i, sodium-glucose cotransporter 2 inhibitor; HT, hypertension; HL, hyperlipidemia; AF, atrial fibrillation; HbA1c, hemoglobin A1c; eGFR, estimated glomerular filtration rate; ICAS, intracranial atherosclerosis; SVD, small vessel disease; mRS, modified Rankin Scale; NIHSS, National Institutes of Health Stroke Scale; IV, intravenous.



Supplementary Figure 2. Functional outcome at discharge and at 3 months based on the use of SGLT2i during admission before and after propensity score matching. Distribution of mRS scores at discharge and at 3 months based on SGLT2i use for (A and B) the original dataset and (C and D) the propensity score-matched dataset. mRS, modified Rankin Scale; SGLT2i, sodium-glucose cotransporter 2 inhibitor.