

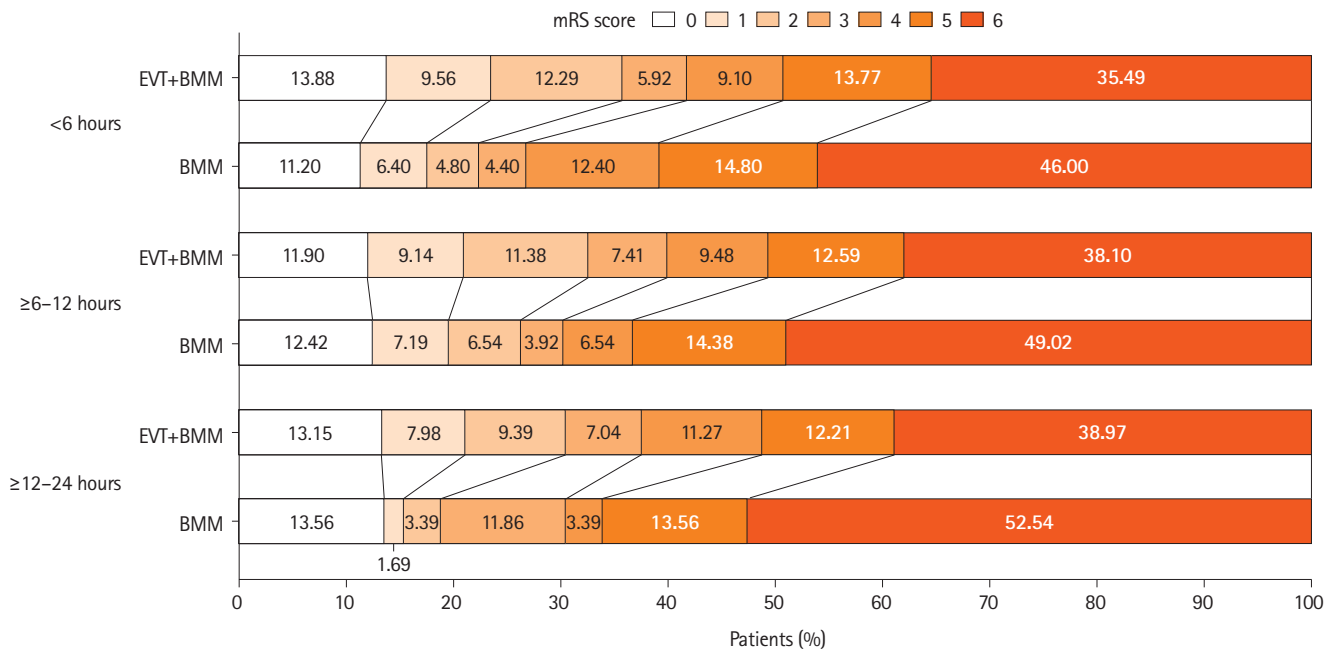
**Supplementary Table 2.** Association of onset-to-arrival time as continuous variables and each outcome for treatment across three time windows in patients received EVT

	<6 hours (n=1,129)	≥6–12 hours (n=733)	≥12–24 hours (n=272)	P for interaction
<b>Clinical outcomes</b>				
mRS at 90 days*	0.96 (0.87, 1.07)	0.97 (0.89, 1.07)	0.71 (0.49, 1.03)	0.42
mRS 0–3 at 90 days <sup>†</sup>	0.97 (0.92, 1.04)	0.95 (0.91, 1.00)	0.85 (0.65, 1.11)	0.57
mRS 0–2 at 90 days <sup>†</sup>	0.97 (0.90, 1.05)	0.95 (0.90, 1.01)	0.91 (0.66, 1.27)	0.63
mRS 0–1 at 90 days <sup>†</sup>	0.96 (0.87, 1.05)	0.96 (0.89, 1.03)	1.20 (0.83, 1.72)	0.74
NIHSS score at 24 hours <sup>‡</sup>	-0.01 (-0.71, 0.70)	0.09 (-0.45, 0.64)	1.10 (-1.66, 3.85)	0.88
NIHSS score at 5–7 days or discharge <sup>‡</sup>	0.32 (-0.50, 1.13)	0.15 (-0.40, 0.70)	4.45 (1.70, 7.21)	0.39
mTICI 2b–3 <sup>†</sup>	0.98 (0.96, 1.00)	1.01 (0.99, 1.03)	0.99 (0.92, 1.08)	0.04
<b>Safety outcomes</b>				
Mortality at 90 days <sup>†</sup>	0.98 (0.93, 1.03)	0.98 (0.93, 1.04)	1.32 (1.05, 1.66)	0.24
sICH at 3 days <sup>†</sup>	1.00 (0.84, 1.19)	0.85 (0.71, 1.01)	1.11 (0.41, 2.98)	0.30

Estimates were adjusted for age, baseline NIHSS, pc-ASPECTS score, history of atrial fibrillation, history of diabetes mellitus, history of stroke, level of occlusion sites, intravenous thrombolysis, GCS score, and center preference for EVT.

EVT, endovascular treatment; mRS, modified Rankin Scale; NIHSS, National Institutes of Health Stroke Scale; mTICI, modified Thrombolysis in Cerebral Infarction; sICH, symptomatic intracranial hemorrhage; pc-ASPECTS, Posterior circulation Alberta Stroke Program Early Computed Tomography Score; GCS, Glasgow Coma Scale; CI, confidence interval.

\*The effect measure was expressed as a common odds ratio (95% CI); <sup>†</sup>The effect measure was expressed as a rate ratio or risk ratio (95% CI); <sup>‡</sup>The effect measure was expressed as a mean difference (95% CI).



**Supplementary Figure 1.** Modified Rankin Scale (mRS) score distribution at 90 days according to treatment arms and onset-to-door time. EVT, endovascular treatment; BMM, best medical management.